

A stylized illustration of a desert landscape. A winding road in shades of blue and teal leads from the bottom left towards the center. The desert floor is a warm orange-brown, dotted with small, dark green bushes and two tall, dark green saguaro cacti. In the background, there are large, layered mountains in various shades of orange and brown. The sky is a pale, hazy blue with a few soft, white clouds. A large, light blue circular graphic element is positioned on the left side, partially overlapping the road and the mountains.

2026

MISSIONAL SPIRITUAL DIRECTION

Certificate Program



BAKKE
GRADUATE
UNIVERSITY

Program Description

The Missional Spiritual Direction (MSD) Certificate Program prepares individuals to become spiritual companions who guide others with wisdom, presence, and purpose. The program offers essential skills, theological grounding, and hands-on experience in listening deeply, discerning prayerfully, and walking alongside others on their spiritual journey.

What is *Missional* Spiritual Direction?

At its heart, spiritual direction helps individuals deepen their relationship with the divine through attentive presence and reflective questions. This tradition has always included a missional dimension, encouraging people to respond to God both inwardly and outwardly in love, service, and justice.

We use the word *missional* to reclaim this holistic vision. Though the term is often overused or misunderstood, we emphasize its original meaning: living a life where contemplation and action are one integrated path. Missional spiritual direction helps connect personal formation to vocational calling and communal engagement.

Rooted in inclusivity and diversity, missional spiritual directors draw from a variety of traditions and remain attentive to power, privilege, and access—working to make spiritual guidance available to all.

"It is easier to find guides, someone to tell you what to do, than someone to be with you in a discerning, prayerful companionship as you work it out yourself. This is what spiritual direction is."

How is the Cohort Designed?

The MSD Certificate Program is a **two-year *online cohort-based*** journey consisting of **six modules** and a practicum. Each module includes **nine sessions**.

Year	Jan-Mar	Apr-Jun	Jul-Aug	Sep-Nov	Dec
First Year	Module 1	Module 2	Break	Module 3	Break
Second Year	Module 4	Module 5	Break	Module 6	Completed

TWO-YEAR COHORT SCHEDULE (SUBJECT TO CHANGE)

Cohort sessions are held on **Zoom** and last 1.5 hours each. Between sessions, participants engage in ongoing conversation and reflection through an online community on Discord, a free messaging app.

Requirements for Completion

- Attend 90% of the classes.
- Complete 90% of the readings.
- Complete practicum:
 - **40** hours: *offering* spiritual direction sessions (as a trainee)
 - **18** hours: *receiving* supervision (on practicum sessions)

Upon completing the program, participants will receive certification as a Missional Spiritual Director from Bakke Graduate University.

Program Outline

- **Online Orientation:**
Introduction to Missional Spiritual Direction.
- **Module 1: Directors**
Focuses on the identity, posture, and core practices of a missional spiritual director, with an emphasis on contemplative listening and grounded presence.
- **Module 2: Directees**
Centers on attending to the journey of the directee, guiding them through presence, discernment, and transformation while honoring their longing for connection with God.
- **Module 3: Soul Cure**
Explores the human condition, spiritual formation, and the transformational journey in missional spiritual direction, with an integrated practicum and supervision.
- **Module 4: Soul Care**
Guides spiritual directors in helping others abide in God, align with the Spirit, and actualize their faith through deeper union and embodied practices.
- **Module 5: Group Spiritual Direction**
Equips participants to facilitate group spiritual direction with attentiveness, trust-building, and spacious listening, supported by a supervised practicum.
- **Module 6: Active Contemplative Life**
Engages the intersection of contemplation and mission, helping directors accompany others in discerning calling, practicing presence, and living faithfully in the world.

Tuition, Registration, & Dates

Registration & Information: bgu.edu/certificates

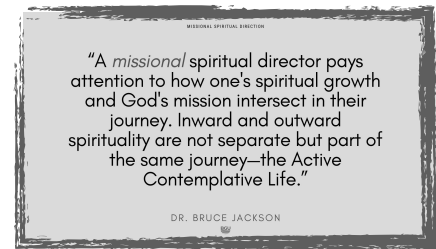
- **Step 1:** Apply Online or download **PDF** | **Word**
- **Step 2:** Email Application to bruce.jackson@bgu.edu
- **Step 3:** Interview (To be scheduled)

Application Deadline: December 1, 2025

Tuition: \$3,750

The Cohort Start Date: January 2026

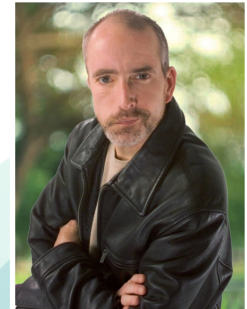
Got Questions?: Contact [Bruce Jackson](#)



Facilitators

Dr. Bruce Jackson

Bruce directs the Doctor of Ministry Program at BGU and brings experience as an associate pastor, community development leader, spiritual director, and executive pastor. His expertise includes spiritual direction and urban contemplative practices in both U.S. and international settings.



Rev. Daniel Y. Lee

Dan serves as Formation Pastor at Renaissance Church, guiding leaders in a decentralized network of microchurches. A longtime church planter, he journeys with those on spiritual pilgrimage, offering spiritual direction, mentorship, and care rooted in presence and discernment.



Dr. Page Mallett

Page is a spiritual director, practicum supervisor, and Ignatian facilitator at BGU and the Ignatian Spirituality Centre of Montreal. A former English teacher, she helps curate resources for the Society of Christian Scholars and supports women leaders in the global South.

